



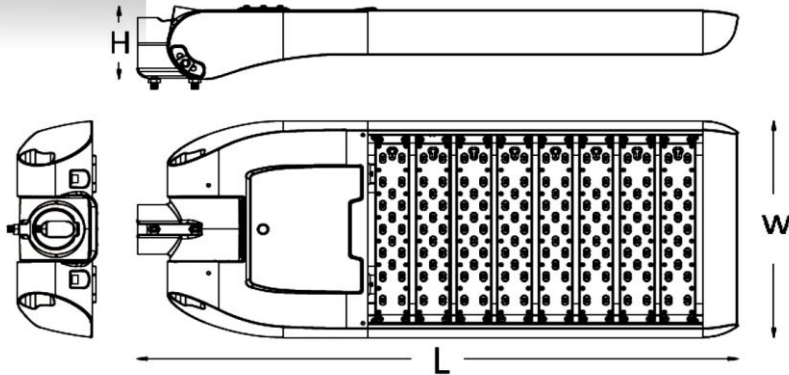
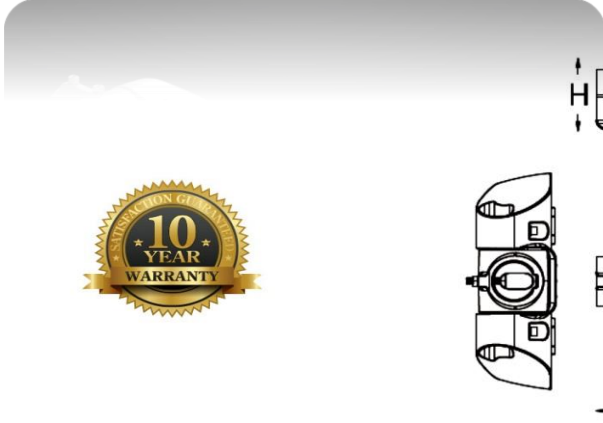
COOL FIN LED MODULAR ROADWAY / AREA HYBRID SERIES



cULus and DLC QPL listed.
(UL File No.: E467349)



IEC/EN 60598-2-3/A1: 2011
 EN 62493:2010
 IEC62471:2008
 IEC62471-2:2009
 EN 55015: 2013
 EN61547:2009
 EN61000-3-2/A2:2009
 EN 61000-3-3:2013
 (EU) 1194/2012:2012-12-12
 (EC) 244/2009:2009-03-18
 ENEC: No.: U6140888771007 (SLA models)
 CB: No. : SG-LE-00951 (SLA models)
 Ik08 rating, 3G vibration, 1000 hours salt mist test reports are furnished upon request.



Features & Benefits

- Based on the most successful product development, manufacturing and application expertise and experience.
- Powered by the worldwide best LED, LED drivers, and other key components.
- cULus, DLC listed, and certified as per CE (lvd, emc, RoHS, Erp directives), CB, ENEC standards.
- Sufficient optics solutions at option to meet almost all roadway/street and area lighting application standards.
- Modular mechanical construction, and the most thoughtful design, make the product the most user friendly and easiest for assembly, maintenance and installation.
- The most competitive in cost performance, and one of the best ownership costs. 10 years limited warranty, free from maintenance for 10 years at least, the most competitive in operating cost, soonest in return on investment (ROI) or payback.
- Environmentally friendly packaging materials (EPE).



Applications

Municipal and rural street, roadway, or area lighting.



HEAD OFFICE - EDMONTON

18805 87A Ave
 Edmonton AB T5T 5Z7
 ph: 780 - 905 - 3970
 Fax 780-489-9441

BC REGIONAL HEAD OFFICE

9338 Lochside Drive
 Sidney, BC V8L 1N7
 PH: 250 - 213-5070
 Fax 250 - 656-1392



Brief Specifications-120-277V AC or 220-240V

Model No.	CFSLPMHB60	CFSLPMHB90	CFSLPMHB120	CFSLPMHB150	CFSLPMHB180	CFSLPMHB210	CFSLPMHB240	CFSLPMHB270	CFSLPMHB300
No. of LEDs	36	54	72	90	108	126	144	162	180
Power	60W	90W	120W	150W	180W	210W	240W	270W	300W
Net Weight	7.09kg	8.22kg	8.88kg	9.47kg	10.83kg	11.47kg	12.49kg	13.12kg	13.88kg
E PA (1 Fixture at 0° mount)	0.5sq. ft.	0.54sq. ft.	0.59sq. ft.	0.63sq. ft.	0.67sq. ft.	0.72sq. ft.	0.76sq. ft.	0.8sq. ft.	0.84sq. ft.
Gross Weight	8.16kg	9.35kg	10.05kg	10.73kg	12.15kg	12.84kg	13.91kg	14.64kg	15.44kg
Dimensions (L x W x H)	523 x 345 x 116(mm)	583 x 345 x 116(mm)	643 x 345 x 116(mm)	703 x 345 x 116(mm)	763 x 345 x 116(mm)	823 x 345 x 116(mm)	883 x 345 x 116(mm)	943 x 345 x 116(mm)	1033 x 345 x 116(mm)
Carton Dimensions (L x W x H)	315 x 425 x 160mm	375 x 425 x 160mm	435 x 425 x 160mm	495 x 425 x 160mm	615 x 425 x 160mm	675 x 425 x 160mm	735 x 425 x 160mm	795 x 425 x 160mm	855 x 425 x 160mm
Input	120-277V AC or 220-240V AC 50/60Hz								

Drive current:530mA

Brief Specifications-347-480V AC 50/60Hz

Model No.	CFSLPMHBC80	CFSLPMHBC120	CFSLPMHBC160	CFSLPMHBC200	CFSLPMHBC240	CFSLPMHBC280	CFSLPMHBC320
No. of LEDs	36	54	72	90	108	126	144
Nominal Power	80W	120W	160W	200W	240W	280W	320W
Net Weight	7.09kg	8.22kg	8.88kg	10kg	10.83kg	11.47kg	12.49kg
E PA (1 Fixture at 0° mount)	0.5sq. ft.	0.54sq. ft.	0.59sq. ft.	0.63sq. ft.	0.67sq. ft.	0.72sq. ft.	0.76sq. ft.
Gross Weight	8.16kg	9.35kg	10.05kg	11kg	12.15kg	12.84kg	13.91kg
Dimensions (L x W x H)	523 x 345 x 116(mm)	583 x 345 x 116(mm)	643 x 345 x 116(mm)	703 x 345 x 116(mm)	763 x 345 x 116(mm)	823 x 345 x 116(mm)	883 x 345 x 116(mm)
Carton Dimensions (L x W x H)	595 x 425 x 160(mm)	655 x 425 x 160(mm)	715 x 425 x 160(mm)	775 x 425 x 160(mm)	835 x 425 x 160(mm)	895 x 425 x 160(mm)	955 x 425 x 160(mm)
Input	347-480V A C 50/60Hz						

Drive current:700mA



General Specifications

Electrical:

- Power Factor: >0.95 at full load.
- Total Harmonic Distortion: <20% at full load.

Lifetime per TM21 and working temperature:

- Reported L70 Lifetime: >60,000 hours . Calculated L70 Lifetime: >100,000 hours.
- Ambient Temperature (Ta): -40 to 50 degrees celcius (-40 to 122 degrees Fahrenheit)

Typical Luminous Efficacy:

- Typical Luminous Efficacy(120V): 110 lm/w (5000K CCT, Ra>70).
- Typical Luminous Efficacy(347V): 100 lm/w (5000K CCT, Ra>70).
- System Efficacy and power are customized, e.g. 130 lm/W.

Materials:

- LED option: CREE or PHILIPS Lumileds.
- LED Driver Origin: PHILIPS or MEANWELL.
- Worldwide top brand quick connector for tool-free wiring, and terminal block for easiest wiring.
- Extruded aluminium LED driver compartment with die cast aluminium end cap, and led light bar end caps with corrosion resistant powder coating. Extruded aluminium alloy heat sink with anodized finish. 304 graded stainless steel protective cover to protect UV resistant polycarbonate lenses.

Available Options

POWER	OPTICS		HOUSING		CCT	LIGHTING CONTROL		ADD:
(120-277V AC)	1) T1M	Type I Medium	GR	GREY	3000K	0	NOT REQUIRED	0
(347-480V AC)	2) T2M	Type II Medium	BK	BLACK	4000K	1	PHOTO CELL	Enquire
	3) T3M	Type III Medium	WH	WHITE	5000K	2	MOTION SENSOR	Enquire
	4) T3L	Type III Long	BZ	BRONZE	5700K	3	PHOTO CELL & MOTION SENSOR	Enquire
	5) T4S	Type IV Short				4	DALI	Enquire
						5	1 10V DIMMING	Enquire

Ordering Information

CFSLPMHB - 150-120-T2M-5000-BZ-0							
Example1:	CFSLPMHB	150	120	T2M	5000	BZ	0
	type	wattage	input	lens	cct	Housng Color	Lighting control

CFSLPMHBC - 320-347-T2M-5000-BK-1							
Example2:	CFSLPMHBC	320	347	T2M	5000	BK	1
	type	wattage	input	lens	cct	Housng Color	Lighting control

HEAD OFFICE - EDMONTON

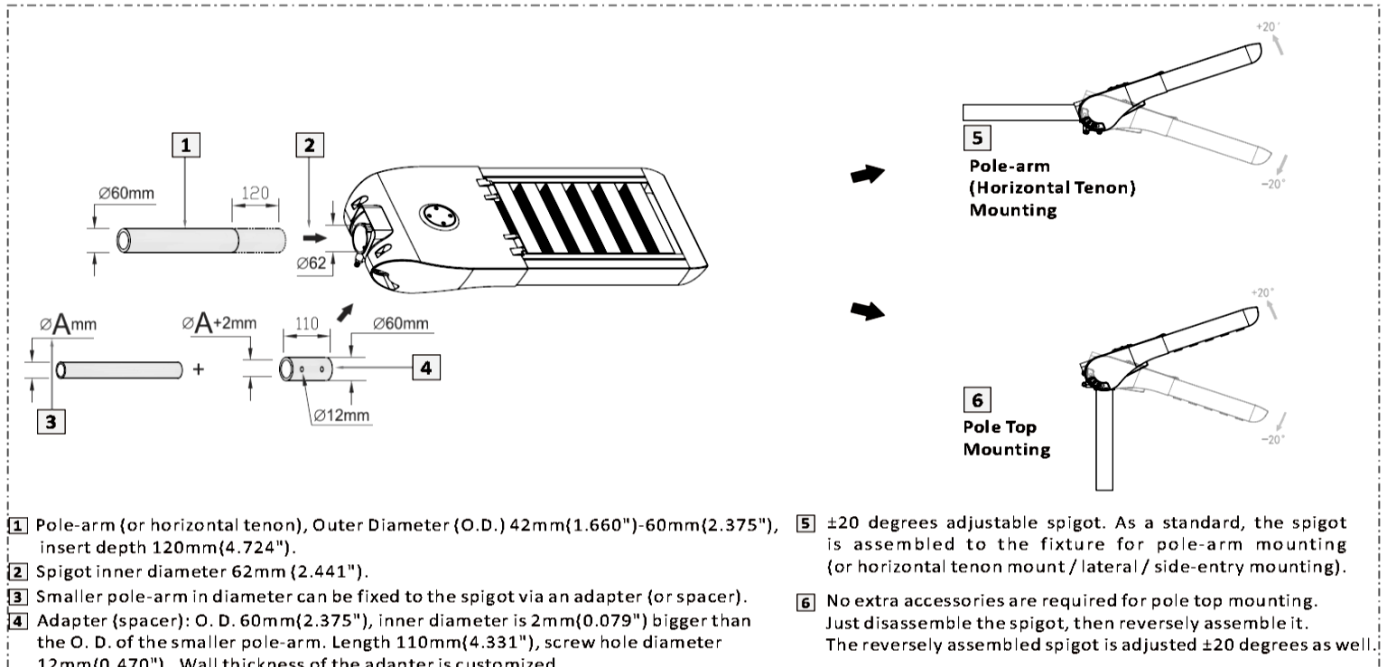
18805 87A Ave
Edmonton AB T5T 5Z7
ph: 780 - 905 - 3970
Fax 780-489-9441

BC REGIONAL HEAD OFFICE

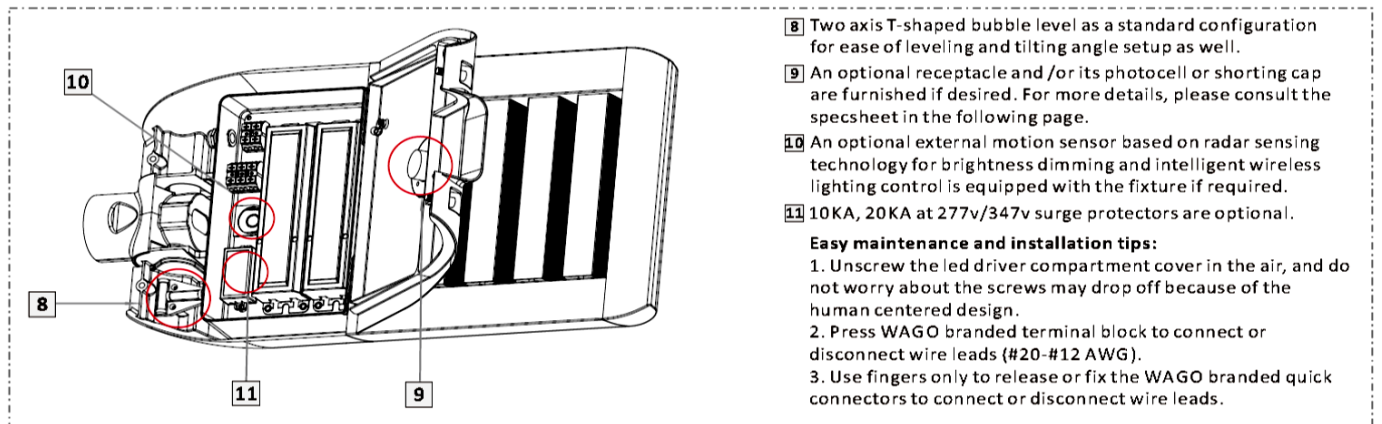
9338 Lochside Drive
Sidney, BC V8L 1N7
PH: 250 - 213-5070
Fax 250 - 656-1392



MOUNTING AND OPTION ACCESSORIES



Optional Field-installed Accessory: Bird Spikes for LED Light Bars.



HEAD OFFICE - EDMONTON

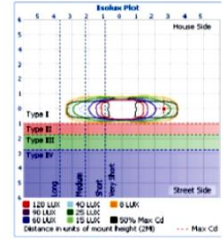
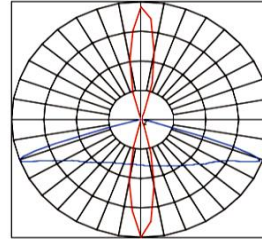
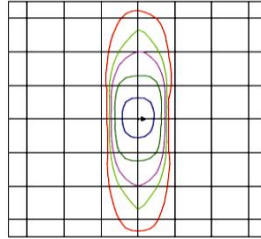
18805 87A Ave
Edmonton AB T5T 5Z7
ph: 780 - 905 - 3970
Fax 780-489-9441

BC REGIONAL HEAD OFFICE

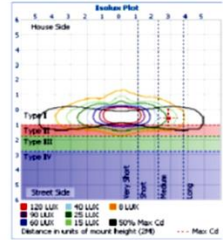
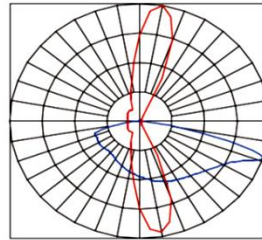
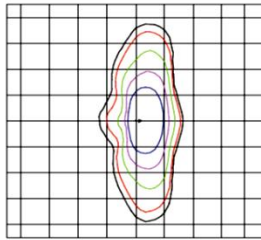
9338 Lochside Drive
Sidney, BC V8L 1N7
PH: 250 - 213-5070
Fax 250 - 656-1392

Photometrics

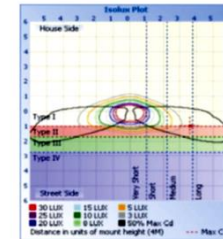
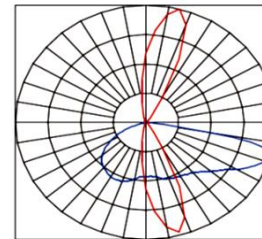
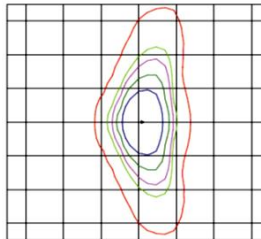
Optic Lens code: T1M
IES Classification: IES Type I Medium



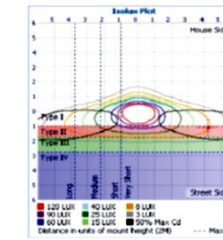
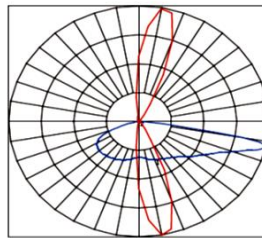
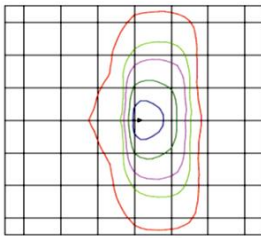
Optic Lens code: T2M
IES Classification: IES Type II Medium



Optic Lens code: T3M
IES Classification: IES Type III Medium



Optic Lens code: T3L
IES Classification: IES Type III Long



Optic Lens code: T4S
IES Classification: IES Type IV Short

